



THE DAVID ROCHE FOUNDATION  
ADELAIDE

# House Museum



---

HOUSE MUSEUM  
EXHIBITIONS | TOURS | SHOP

---

[www.rochefoundation.com.au](http://www.rochefoundation.com.au)

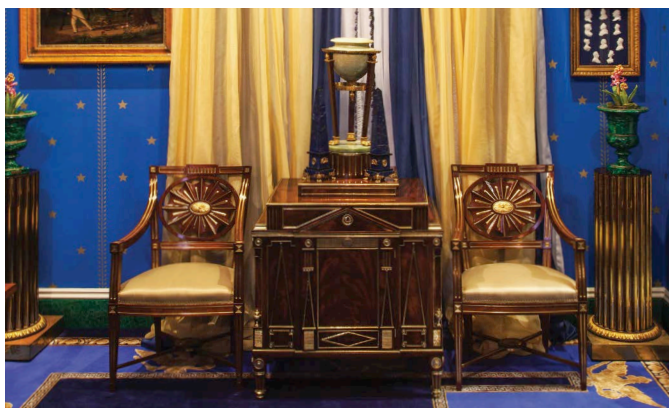


## The David Roche Collection

The David Roche Foundation established in 1999 by the late David Roche AM (1930-2013) is one of the greatest collections of European decorative arts in a private institution in Australia.

Set within the sumptuous interiors of David Roche's Federation-era home, Fermoy House, is a lifetime's worth of collecting: antiques, paintings, and objects d'art, spanning two centuries of art and design from the early Rococo of France to Fabergé in Russia, to be preserved for future generations.

The adjoining gallery wing presents regularly changing exhibitions.





## House Tours

House tours must be pre-booked online at  
[www.rochefoundation.com.au](http://www.rochefoundation.com.au)

Tuesday – Saturday | 10am, 12pm & 2pm

\$20 General | \$17 Concession

(Includes entry to exhibition)

## Exhibitions

Tuesday to Saturday 10am to 4pm

No booking required

## The David Roche Foundation

241 Melbourne Street

North Adelaide SA 5006

(Free onsite parking available)

T. (08) 8267 3677 | E. [info@rochefoundation.org.au](mailto:info@rochefoundation.org.au)

[www.rochefoundation.com.au](http://www.rochefoundation.com.au)

## Public Transport

Adelaide Metro runs regular bus services to and from the City to Melbourne Street and the free City Connector bus passes close by.



---

**A sensory feast  
just minutes from the Adelaide CBD**

---

**241 Melbourne Street, North Adelaide SA 5006**